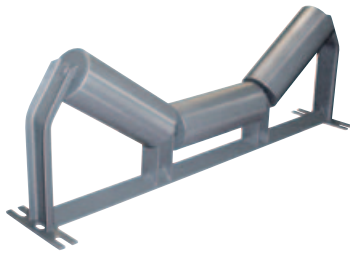
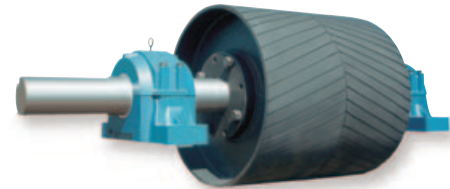


# For Fast Deliveries On:



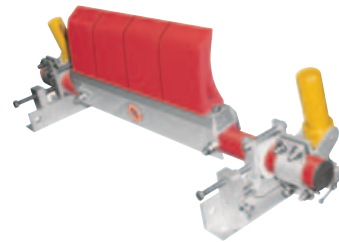
**Pulleys**

**Lagging**



**Idlers**

**Belt  
Cleaners**



**Magnetic  
Separators**



**Take-Ups**



**3 Year  
Limited Warranty  
on Pulp & Paper Mill  
Duty Components**



PHONE 205-884-1200 • FAX 205-884-1206  
300 INDUSTRIAL DRIVE • PELL CITY, ALABAMA 35125  
EMAIL sales@douglasmanufacturing.com  
www.douglasmanufacturing.com

**FOR FAST SERVICE  
CALL YOUR  
DOUGLAS DISTRIBUTOR**

Copyright © January 2005 Douglas Manufacturing Co., Inc. All Rights Reserved.

## Pulp & Paper Mill Duty Components

**ENGINEERED and BUILT TO EXCEED THE WORKING REQUIREMENTS of  
PULP AND PAPER MILL DUTY APPLICATIONS**



## Pulp & Paper Mill Duty Drum Pulleys



### Benefits

- Exclusive One Piece Rolled-in Crown ensures consistent, proper belt tracking and tighter tolerances

### Construction

- Engineered for the roughest applications, rugged Douglas Pulp & Paper Mill Duty Drum Pulleys are intended for use in applications where down time must be minimized
- Heavy construction reduces the likelihood of metal fatigue and pulley failure in severe applications minimizing down-time and maintenance
- Full depth weld with reinforcing bar on single longitudinal seam featured on each Douglas Pulp & Paper Mill Duty Drum Style Conveyor Pulley

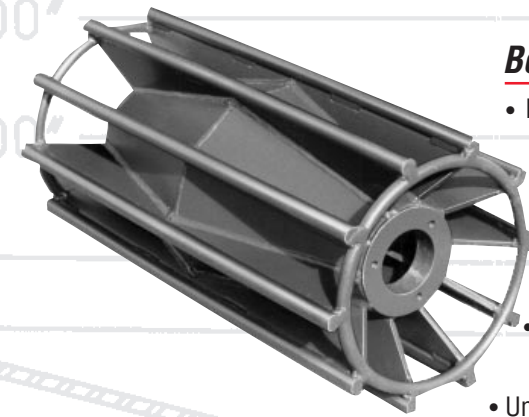
- Crown face pulleys are furnished standard, flat face must be specified

- Douglas hubs feature full depth welds on the inside and outside of the pulley end disk decreasing the likelihood of end disk failure due to shaft deflection and shock loads
- Douglas hubs and bushings are interchangeable with QD®, XT® style, HE, or Taper Lock Bushings

### Options

- Hot Vulcanized Pulley Lagging
- Shafting
- Bearing Assemblies
- Take-Up Systems
- QD®, XT®, HE Taper lock Hubs & Bushings
- Stainless Steel Construction
- Galvanized Construction
- Shaft Mount Reducers
- Optional Douglas Keyless Locking Assemblies available

## Pulp & Paper Mill Duty Wing Self-Cleaning Pulleys



### Benefits

- Douglas Pulp & Paper Mill Duty Wing Style Pulleys feature exclusive minimum 1" solid steel round bars:
  - Increases service life
  - Helps prevent wing folding damage
  - Wear twice as long as other manufacturers' formed flat bar or 1/4 round bar
- Special self-cleaning angle formed by gussets discharges material away from the belt and the pulley face helping to prevent material build up
- Unique design creates a refined motion that helps to dislodge materials from the belt top cover
- Protect belt bottom cover from cuts and tears
- Less belt vibration from smoother belt contact

### Construction

- Heavy construction of the wings and gussets reduces the likelihood of metal fatigue and pulley failure in severe applications
- Crown face pulleys are furnished standard, flat face must be specified
- Douglas hubs and bushings are interchangeable with QD®, XT®, HE or Taper lock

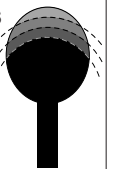
### Options

- Hot Vulcanized Wing Pulley Lagging
- Galvanized Stainless Steel
- "AR" abrasion resistant wing tips available
- Optional Douglas Keyless Locking Assemblies available
- Shafting

**DOUGLAS SOLID 1" STEEL ROUND BAR WING TIPS WEAR LONGER AND RETAIN ROUNDNESS.**

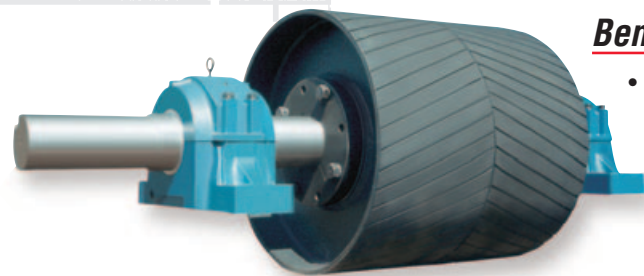
WEARS THREE TIMES AS LONG AS OTHER MANUFACTURERS FORMED FLAT BAR OR 1/4 ROUND

PROTECTS UNDERSIDE OF BELT FROM CUTS, SMOOTHER RUNNING



- Bearing Assemblies
- Take-Up Systems

## Hot Vulcanized Drum Pulley Lagging



### Benefits

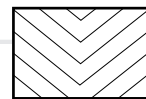
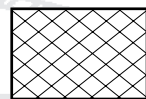
- Douglas truck tire tough conveyor pulley lagging increases the traction between the belt bottom cover and the pulley face, reducing belt slippage
- Douglas conveyor pulley lagging protects the pulley face in abrasive conditions and extends pulley service life providing trouble-free service

### Construction

- All Pulp & Paper Mill Duty pulley lagging is hot vulcanized in our plant to strict tolerances and the highest industry standards
- Available in a wide range of finishes:

Standard Plain Wrap Cloth Impression (LPL)  
Herringbone/Chevron Groove (LHG)

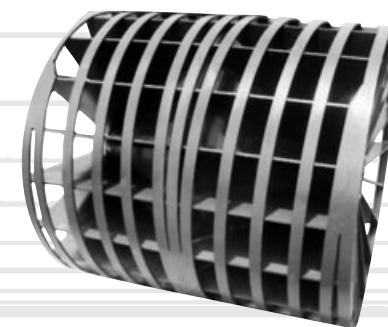
Diamond Groove Pattern (LDG)  
Machine Finish (LGM)



### Options

- SBR/natural Compound standard
- Oil Resistant Compound
- Nitrile
- Neoprene
- EPDM (Ethylene-Propylene)
- MSHA
- SCOF (Static Conductive Oil Resistant Fire Retardant)
- Ceramic Lagging

## Spiral Wing Pulley



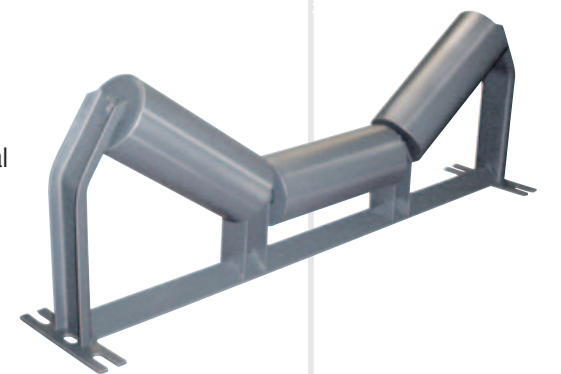
### Benefits

- Promotes self cleaning, helps move material to outside edges of tail pulley
- Helps smooth out vibrating belt movement

### Construction

- Flat steel bars helically wound around wing fins

## Idlers



- CEMA Class C, D
- 4", 5" & 6" Diameter, 18" - 60" Belt Width.
- Troughing, steel and rubber disk returns, impact, self aligning/training idlers, unequal length troughing, channel mount/low profile and flat carrying design and specials.
- Sealed for Life ball bearing design.
- Directly interchange with other manufacturers' troughing and return idlers built to CEMA specifications.
- Engineered for improved sealing, better stability and longer life.

QD® & XT® are registered trademarks of Emerson Electric.

QD® & XT® are registered trademarks of Emerson Electric.