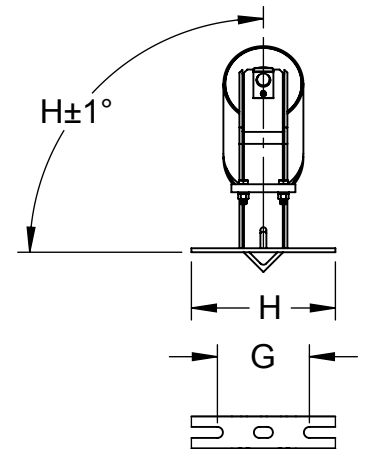
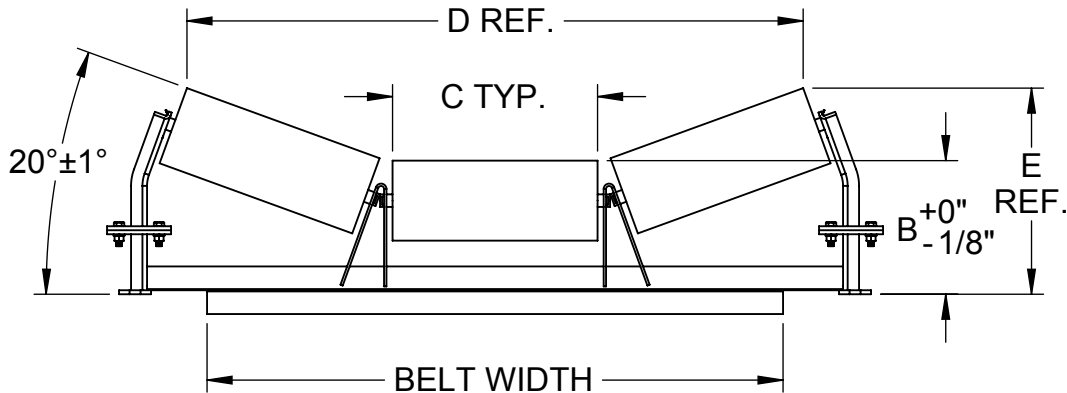

Notes:

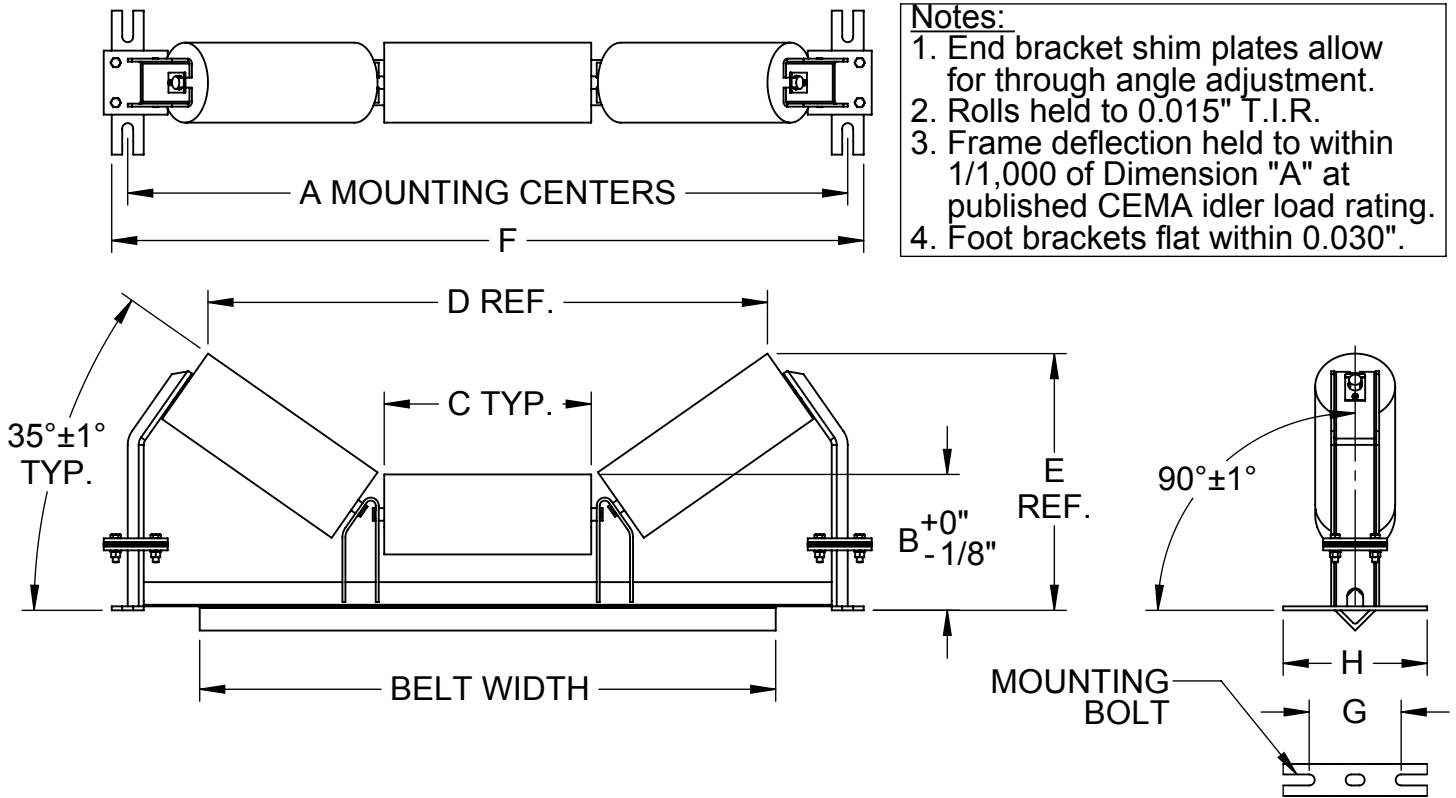
1. End bracket shim plates allow for through angle adjustment.
2. Rolls held to 0.015" T.I.R.
3. Frame deflection held to within 1/1,000 of Dimension "A" at published CEMA idler load rating.
4. Foot brackets flat within 0.030".


CEMA C 20° SCALE QUALITY TROUGH IDLER 5" DIAMETER ROLLS

BELT WIDTH	MODEL NO.	WT.	A	B	C	D	E	F	G	H	MOUNTING BOLT
18	DCQ-18-20-05	48	27	8 3/8	6 5/8	20 3/16	10 7/8	29	6	7 1/2	1/2
24	DCQ-24-20-05	55	33	8 3/8	8 11/16	26 3/8	11 9/16	35	6	7 1/2	1/2
30	DCQ-30-20-05	64	39	8 3/8	10 15/16	32 5/8	12 1/4	41	6	7 1/2	1/2
36	DCQ-36-20-05	73	45	8 3/8	12 15/16	38 1/2	12 7/8	47	6	7 1/2	1/2
42	DCQ-42-20-05	87	51	8 3/4	14 15/16	44 3/16	13 15/16	53	7 1/2	9	5/8
48	DCQ-48-20-05	96	57	8 3/4	16 15/16	49 15/16	14 5/8	59	7 1/2	9	5/8
54	DCQ-54-20-05	112	63	9 3/16	18 15/16	55 11/16	15 3/4	65 1/2	9	11	5/8
60	DCQ-60-20-05	114	69	9 3/16	20 15/16	61 1/2	16 7/16	71 1/2	9	11	5/8

CEMA C 20° SCALE QUALITY TROUGH IDLER 6" DIAMETER ROLLS

BELT WIDTH	MODEL NO.	WT.	A	B	C	D	E	F	G	H	MOUNTING BOLT
18	DCQ-18-20-06	54	27	8 7/8	6 5/8	19 13/16	11 5/16	29	6	7 1/2	1/2
24	DCQ-24-20-06	55	33	8 7/8	8 11/16	26 1/16	12	35	6	7 1/2	1/2
30	DCQ-30-20-06	64	39	8 7/8	10 15/16	32 5/16	12 3/4	41	6	7 1/2	1/2
36	DCQ-36-20-06	73	45	8 7/8	12 15/16	38 3/16	13 5/16	47	6	7 1/2	1/2
42	DCQ-42-20-06	87	51	9 1/4	14 15/16	43 7/8	14 7/16	53	7 1/2	9	5/8
48	DCQ-48-20-06	96	57	9 1/4	16 15/16	49 5/8	15 1/8	59	7 1/2	9	5/8
54	DCQ-54-20-06	112	63	9 11/16	18 15/16	55 3/8	16 1/4	65 1/2	9	11	5/8
60	DCQ-60-20-06	114	69	9 11/16	20 15/16	61 1/8	16 15/16	71 1/2	9	11	5/8


CEMA C 35° SCALE QUALITY TROUGH IDLER 5" DIAMETER ROLLS

BELT WIDTH	MODEL NO.	WT.	A	B	C	D	E	F	G	H	MOUNTING BOLT
18	DCQ-18-35-05	48	27	8 1/2	6 5/8	18	12 7/16	29	6	7 1/2	1/2
24	DCQ-24-35-05	56	33	8 1/2	8 11/16	23 1/2	13 5/8	35	6	7 1/2	1/2
30	DCQ-30-35-05	65	39	8 1/2	10 15/16	29 5/16	14 15/16	41	6	7 1/2	1/2
36	DCQ-36-35-05	73	45	8 1/2	12 15/16	35	16	47	6	7 1/2	1/2
42	DCQ-42-35-05	87	51	8 7/8	14 15/16	40	17 9/16	53	7 1/2	9	5/8
48	DCQ-48-35-05	96	57	8 7/8	16 15/16	45 3/8	18 3/16	59	7 1/2	9	5/8
54	DCQ-54-35-05	113	63	9 15/16	18 15/16	50 1/2	20 1/4	65 1/2	9	11	5/8
60	DCQ-60-35-05	115	69	9 15/16	20 15/16	55 11/16	21 1/2	71 1/2	9	11	5/8

CEMA C 35° SCALE QUALITY TROUGH IDLER 6" DIAMETER ROLLS

BELT WIDTH	MODEL NO.	WT.	A	B	C	D	E	F	G	H	MOUNTING BOLT
18	DCQ-18-35-06	55	27	9	6 5/8	17 7/16	12 7/8	29	6	7 1/2	1/2
24	DCQ-24-35-06	56	33	9	8 11/16	22 7/8	14 1/16	35	6	7 1/2	1/2
30	DCQ-30-35-06	65	39	9	10 15/16	28 3/4	15 3/8	41	6	7 1/2	1/2
36	DCQ-36-35-06	73	45	9	12 15/16	35 9/16	15 9/16	47	6	7 1/2	1/2
42	DCQ-42-35-06	87	51	9 3/8	14 15/16	39 7/16	17 15/16	53	7 1/2	9	5/8
48	DCQ-48-35-06	96	57	9 3/8	16 15/16	44 5/8	19 3/16	59	7 1/2	9	5/8
54	DCQ-54-35-06	113	63	9 13/16	18 15/16	49 7/8	20 5/8	65 1/2	9	11	5/8
60	DCQ-60-35-06	115	69	9 13/16	20 15/16	55 1/16	21 15/16	71 1/2	9	11	5/8