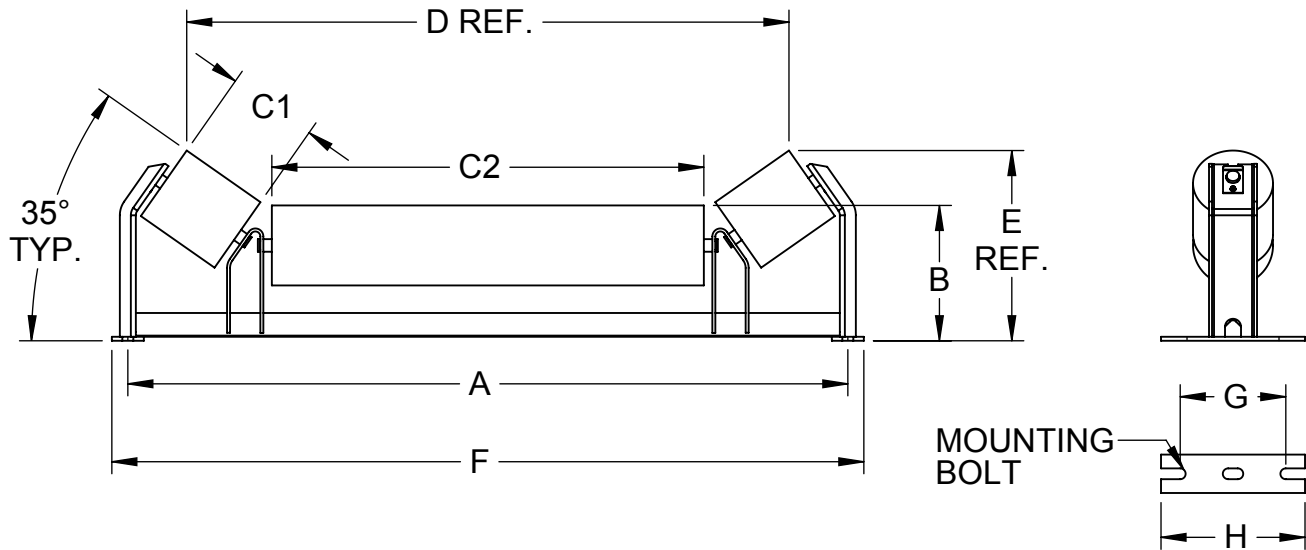

CEMA D 20° PICKING TROUGH IDLER 5" DIAMETER ROLLS

BELT WIDTH	MODEL NO.	WT.	A	B	C1	C2	D	E	F	G	H	MOUNTING BOLT
24	DDP-24-20-05	50	33	8 3/8	5 3/4	14 15/16	27 1/8	10 9/16	35	6	7 1/2	1/2
30	DDP-30-20-05	58	39	8 3/8	7 1/4	18 15/16	33 11/16	11	41	6	7 1/2	1/2
36	DDP-36-20-05	66	45	8 3/8	5 3/4	27	39 5/8	10 7/16	47	6	7 1/2	5/8
42	DDP-42-20-05	79	51	8 3/4	5 3/4	33	45 3/16	10 7/8	53	7 1/2	9	5/8
48	DDP-48-20-05	88	57	8 3/4	5 3/4	39	51 1/2	10 13/16	59	7 1/2	9	5/8
54	DDP-54-20-05	104	63	9 3/16	5 3/4	45	57 1/2	11 3/16	65 1/2	9	11	5/8
60	DDP-60-20-05	112	69	9 3/16	5 3/4	51	63 3/16	16 7/16	71 1/2	9	11	5/8
72	DDP-72-20-05	128	81	9 3/16	5 3/4	63	75 11/16	11 5/16	83 1/2	9	11	5/8

CEMA D 20° PICKING TROUGH IDLER 6" DIAMETER ROLLS

BELT WIDTH	MODEL NO.	WT.	A	B	C1	C2	D	E	F	G	H	MOUNTING BOLT
24	DDP-24-20-06	58	33	8 7/8	5 3/4	14 15/16	26 15/16	11 1/16	35	6	7 1/2	1/2
30	DDP-30-20-06	68	39	8 7/8	7 1/4	18 15/16	33 1/2	11 1/2	41	6	7 1/2	1/2
36	DDP-36-20-06	77	45	8 7/8	5 3/4	27	39 7/16	10 15/16	47	6	7 1/2	5/8
42	DDP-42-20-06	91	51	9 1/4	5 3/4	33	45	11 3/8	53	7 1/2	9	5/8
48	DDP-48-20-06	101	57	9 1/4	5 3/4	39	51 5/16	11 5/16	59	7 1/2	9	5/8
54	DDP-54-20-06	118	63	9 11/16	5 3/4	45	57 5/16	11 11/16	65 1/2	9	11	5/8
60	DDP-60-20-06	128	69	9 11/16	5 3/4	51	61 1/8	16 15/16	71 1/2	9	11	5/8
72	DDP-72-20-06	147	81	9 11/16	5 3/4	63	75 1/2	11 13/16	83 1/2	9	11	5/8


CEMA D 35° PICKING TROUGH IDLER 5" DIAMETER ROLLS

BELT WIDTH	MODEL NO.	WT.	A	B	C1	C2	D	E	F	G	H	MOUNTING BOLT
24	DDP-24-35-05	51	33	8 1/2	6 5/8	12 15/16	24 3/4	12 11/16	35	6	7 1/2	1/2
30	DDP-30-35-05	59	39	8 1/2	5 3/4	21	31 3/16	11 7/8	41	6	7 1/2	1/2
36	DDP-36-35-05	67	45	8 1/2	5 3/4	27	37 5/8	11 7/8	47	6	7 1/2	5/8
42	DDP-42-35-05	80	51	8 1/2	5 3/4	33	43 1/4	12 3/8	53	7 1/2	9	5/8
48	DDP-48-35-05	88	57	8 7/8	5 3/4	39	50 3/16	11 15/16	59	7 1/2	9	5/8
54	DDP-54-35-05	104	63	9 5/16	5 3/4	45	55 3/16	12 13/16	65 1/2	9	11	5/8
60	DDP-60-35-05	113	69	9 5/16	5 3/4	51	61 1/4	12 13/16	71 1/2	9	11	5/8
72	DDP-72-35-05	129	81	9 5/16	5 3/4	63	72 1/16	12 13/16	83 1/2	9	11	5/8

CEMA D 35° PICKING TROUGH IDLER 6" DIAMETER ROLLS

BELT WIDTH	MODEL NO.	WT.	A	B	C1	C2	D	E	F	G	H	MOUNTING BOLT
24	DDP-24-35-06	58	33	9	6 5/8	12 15/16	24 9/16	13 3/16	35	6	7 1/2	1/2
30	DDP-30-35-06	68	39	9	5 3/4	21	31	12 3/8	41	6	7 1/2	1/2
36	DDP-36-35-06	77	45	9	5 3/4	27	37 1/2	12 3/8	47	6	7 1/2	5/8
42	DDP-42-35-06	92	51	9	5 3/4	33	43 1/16	12 7/8	53	7 1/2	9	5/8
48	DDP-48-35-06	102	57	9 3/8	5 3/4	39	50	12 7/16	59	7 1/2	9	5/8
54	DDP-54-35-06	119	63	9 13/16	5 3/4	45	55	13 5/16	65 1/2	9	11	5/8
60	DDP-60-35-06	129	69	9 13/16	5 3/4	51	61 1/16	13 5/16	71 1/2	9	11	5/8
72	DDP-72-35-06	148	81	9 13/16	5 3/4	63	71 7/8	13 5/16	83 1/2	9	11	5/8