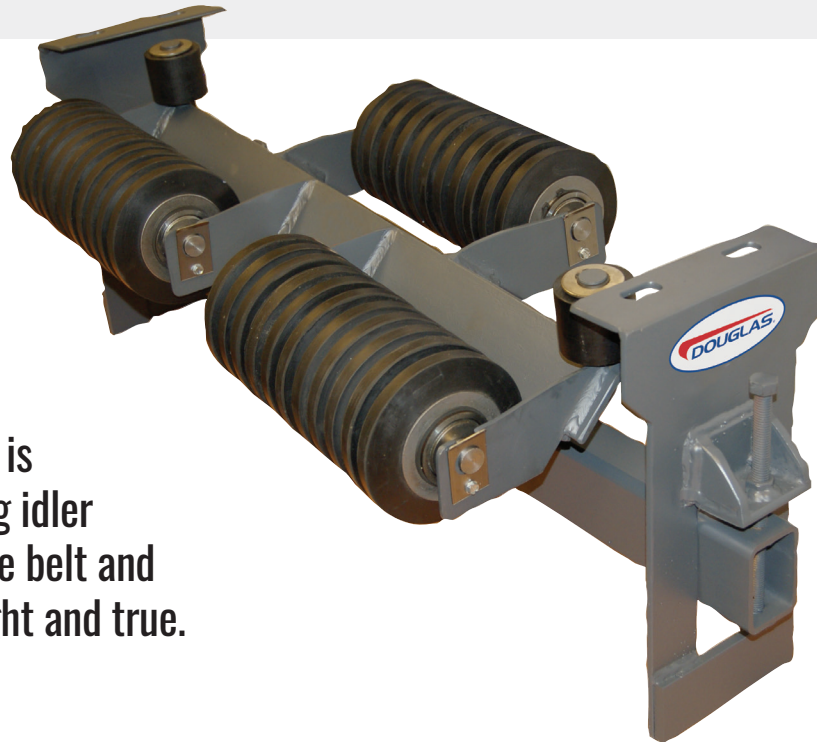


The NEGOTIATOR™ Tracking Return Idler



The Negotiator™ Tracking Return Idler is an innovative tracking idler that helps to track the belt and keep it running straight and true.

Design features include:

- Unique three roller design helps center the belt better than conventional rolls
- Self cleaning frame design helps to prevent material build up by shedding carry-back from the return side of the belt
- Three roll design offers a support bed that cradles the belt and more efficiently reacts to the pressure of the side guide rolls
- Three roll design decreases shaft deflection and increases bearing life inside the roll when compared to conventional single roll return idlers
- Can be used with reversing belts
- Rubber discs help to shed material and prevent material build up on the rolls
- UHMW side guide rolls have the lowest possible coefficient of friction and help to prevent belt damage
- Side guide rolls are strategically positioned to help prevent the belt from contacting the brackets
- Lower profile design is ideal for those tight to fit applications
- The mounting brackets are vertically adjustable $\pm 1"$ providing an additional tracking aid



PULLEYS • IDLERS • TAKE-UPS • IMPACT BEDS • MAGNETICS



Visit us at douglasmanufacturing.com
Contact us 205-884-1200 or sales@douglasmanufacturing.com



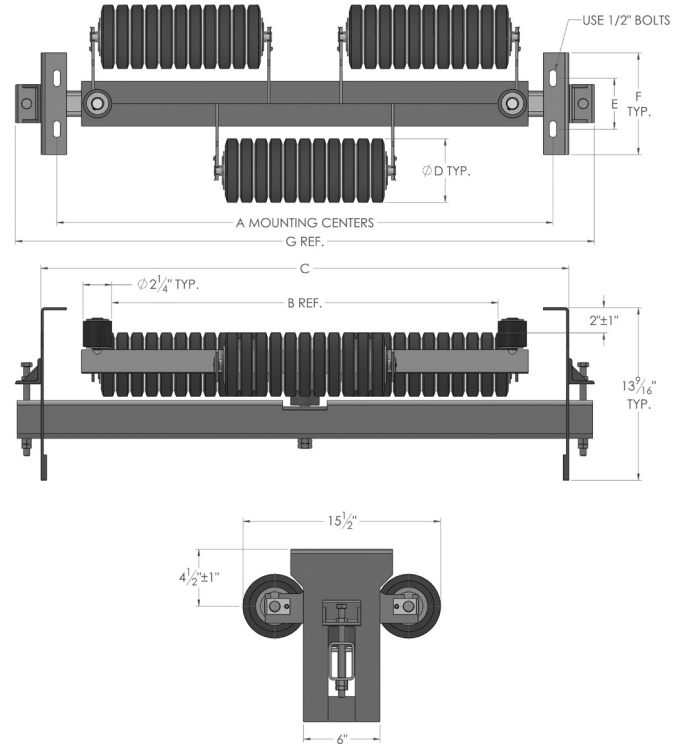
The NEGOTIATOR™ Tracking Return Idler

NEGOTIATOR™ TRACKING RETURN IDLER 5" RUBBER DISCS										
BELT WIDTH	PART NUMBER									MOUNTING BOLTS
		WT.	A	B	C	D	E	F	G	
24	DTA-24-05R	125	33	25 1/4	35 1/2	5	4	8	39 1/4	1/2
30	DTA-30-05R	138	39	31 1/4	41 1/2	5	4	8	45 1/4	1/2
36	DTA-36-05R	148	45	37 1/4	47 1/2	5	4	8	51 1/4	1/2
42	DTA-42-05R	164	51	43 1/4	53 1/2	5	4	8	57 1/4	1/2
48	DTA-48-05R	177	57	49 1/4	59 1/2	5	4	8	63 1/4	1/2
54	DTA-54-05R	190	63	55 1/4	65 1/2	5	4	8	69 1/4	1/2
60	DTA-60-05R	203	69	61 1/4	71 1/2	5	4	8	75 1/4	1/2

FOR STEEL CAN OPTION REPLACE "R" WITH "S" IN THE PART NUMBER

NEGOTIATOR™ TRACKING RETURN IDLER 6" RUBBER DISCS										
BELT WIDTH	PART NUMBER									MOUNTING BOLTS
		WT.	A	B	C	D	E	F	G	
24	DTA-24-06R	131	33	25 1/4	35 1/2	6	4	8	39 1/4	1/2
30	DTA-30-06R	146	39	31 1/4	41 1/2	6	4	8	45 1/4	1/2
36	DTA-36-06R	161	45	37 1/4	47 1/2	6	4	8	51 1/4	1/2
42	DTA-42-06R	175	51	43 1/4	53 1/2	6	4	8	57 1/4	1/2
48	DTA-48-06R	190	57	49 1/4	59 1/2	6	4	8	63 1/4	1/2
54	DTA-54-06R	204	63	55 1/4	65 1/2	6	4	8	69 1/4	1/2
60	DTA-60-06R	219	69	61 1/4	71 1/2	6	4	8	75 1/4	1/2

FOR STEEL CAN OPTION REPLACE "R" WITH "S" IN THE PART NUMBER



4 STOCKING LOCATIONS

24-48 HOUR DELIVERY



300 Industrial Park Drive,
Pell City, AL 35125 (U.S.A)

Visit us at douglasmanufacturing.com
Contact us 205-884-1200 or sales@douglasmanufacturing.com



PULLEYS • IDLERS • TAKE-UPS • IMPACT BEDS • MAGNETICS